

322 S Green Street, Chicago, IL










V.COLLECTIVE™

Overview


- Brick & timber beam creative loft office
- Size: 91,106 RSF
- Stories: 5
- Availability: 1,952 SF – 17,000 SF

Amenities

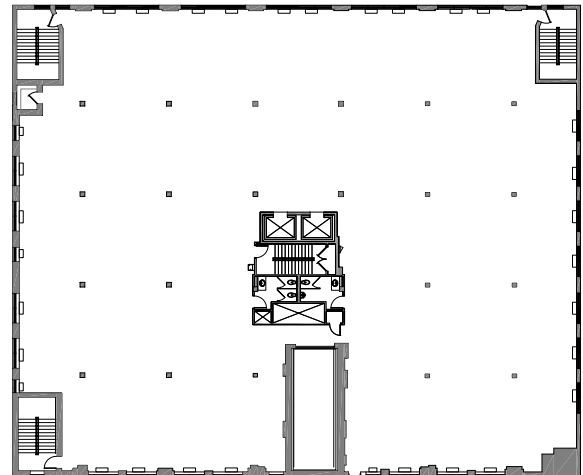
-  Modern, newly designed lobbies and kitchens
-  Stunning roof deck and tenant lounge
-  Brand new conference centers with best-in-class technology
-  On-site parking available for lease
-  Tenant-controlled air conditioning
-  Best-of-class community with multiple internet options and high-performance DAS
-  Bike parking & showers



Available Space

Suite	SF
<u>Suite 110</u>	6,843
<u>Suite 212</u>	1,952
<u>Suite 400</u>	17,015
<u>Suite 505</u>	4,989  Matterport™
<u>Suite 508</u>	4,000

Typical Floorplate | ±17,015 RSF



For more information, please contact:

Chris Cassata

+1 312 470 2300

Chris.Cassata@cushwake.com

Tessa Peabody

+1 312 971 0083

Tessa.Peabody@cushwake.com

